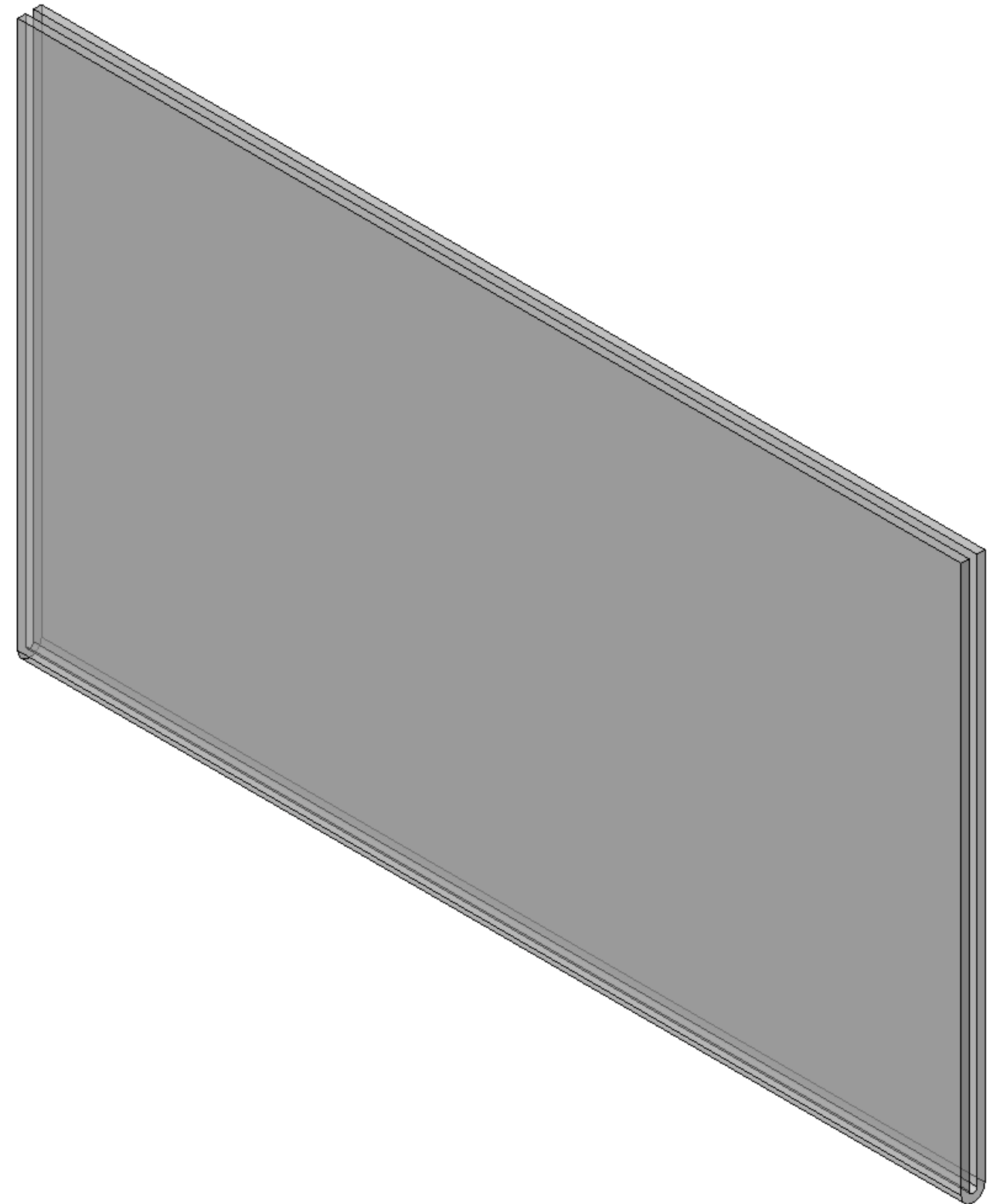
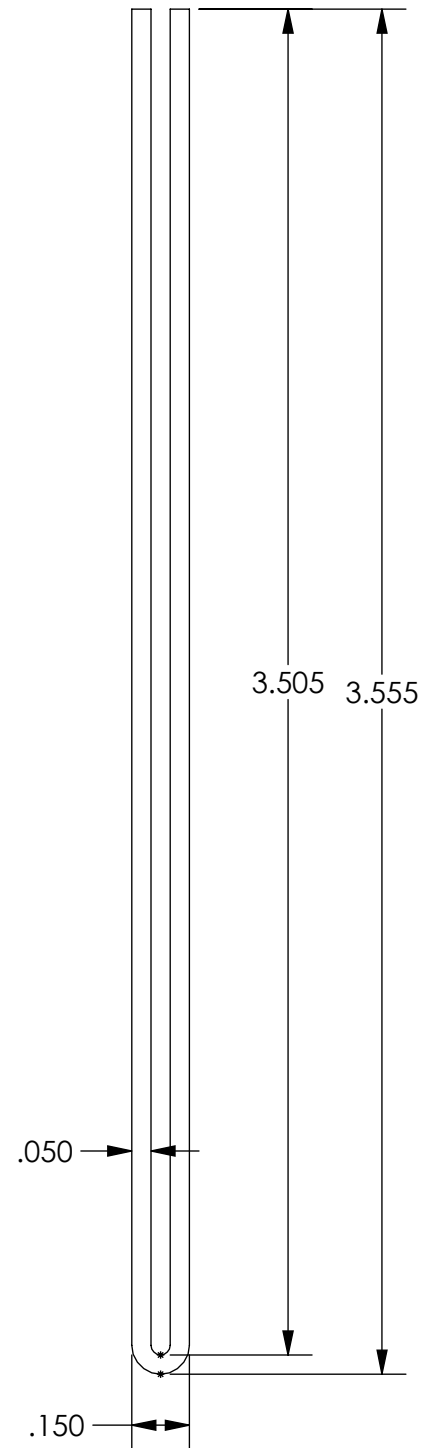



The information contained in this document is the sole property of Creative Plastics LLC. Any reproduction, in part or as a whole without the written permission of Creative Plastics LLC is strictly prohibited.



CUT LENGTH:	48.000"
MATERIAL:	RPVC
COLOR:	CLEAR
PART THICKNESS:	.050"
NOTES:	

REVISIONS			
REV.	DESCRIPTION	DATE	ECR No.
0	RELEASED FOR PRODUCTION	-	

DIMENSIONS IN PARENTHESES ARE FOR REFERENCE ONLY ENCIRCLED DIMENSIONS ARE CRITICAL TO QUALITY UNLESS OTHERWISE SPECIFIED: DIM. ARE IN INCHES, ANGULAR TOL. = $\pm 1^\circ$ LINEAR = $\pm .032$ " FRACTIONS = $\pm 1/32$ INTERPRET DIM. & TOL. PER ASME Y14.5M - 1994	DESIGN:	ENG.	DATE	 Creative Plastics LLC WWW.CREATIVEPLASTICSLLC.COM 1039 Willowdale Rd. NW Dalton, GA 30720
	WH		11/09/2011	
	AREA:	SCALE:	SIZE:	
	.3559	NTS	A	
DIE NUMBER	QUOTE NUMBER			
0304A				
ITEM DESCRIPTION				
3.5 SIGN HOLDER U-CHANNEL				
PART NUMBER			REV.	
UC1031				